

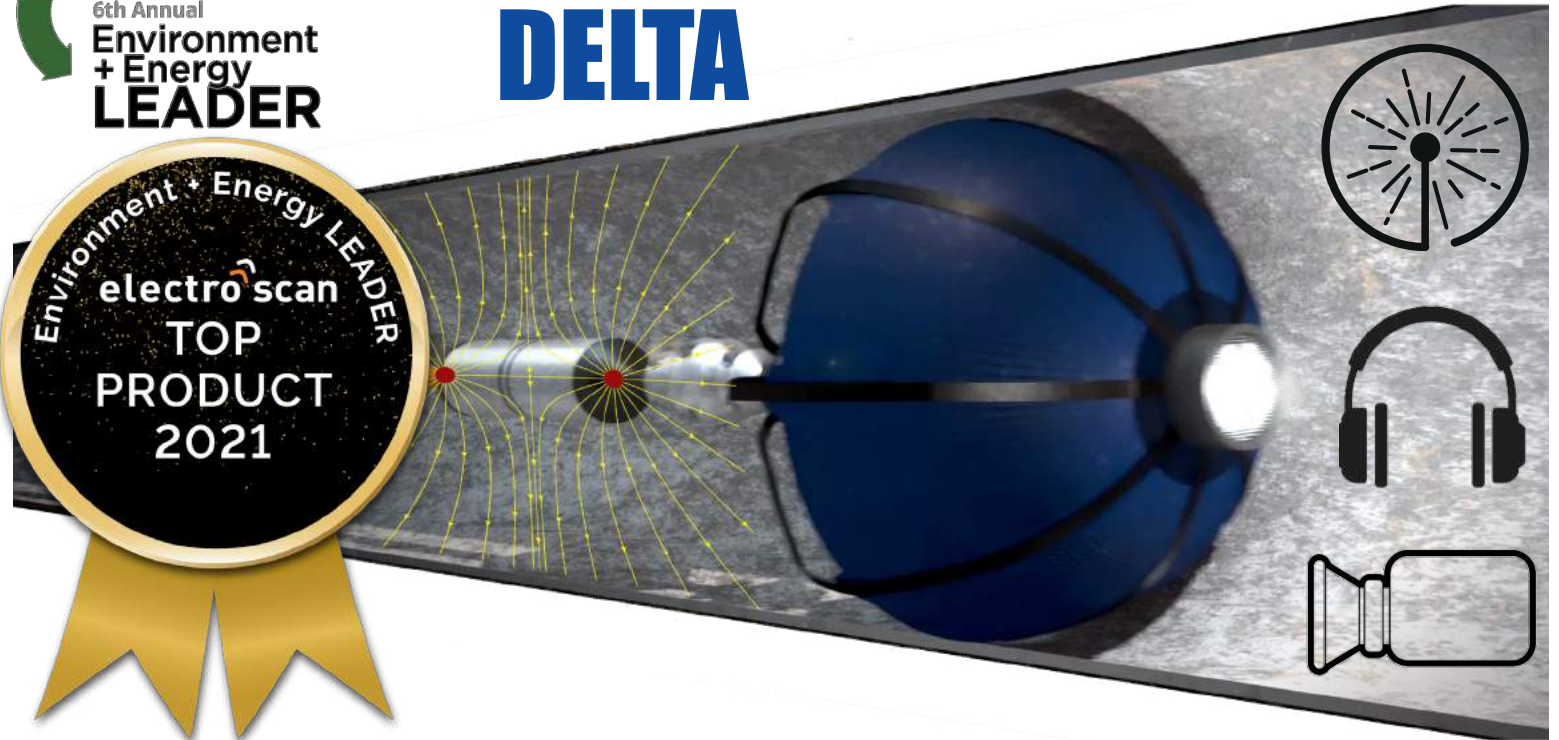
Top Product of the Year

MACHINE-INTELLIGENT NON-ACOUSTIC LEAK DETECTION SOLUTION.



6th Annual
Environment
+ Energy
LEADER

DELTA



FINDS & MEASURES LEAKS MISSED BY ACOUSTIC SENSORS



Solutions Summit
Virtual 2021

Kellogg's

IBM

Jackson
FAMILY WINES



electro
scan inc.

INTELEX



CardinalHealth



WGL
Energy Providers. Ask Us.

TURN TIDE

HydroPoint

OneTrust
ESG

CenterPoint

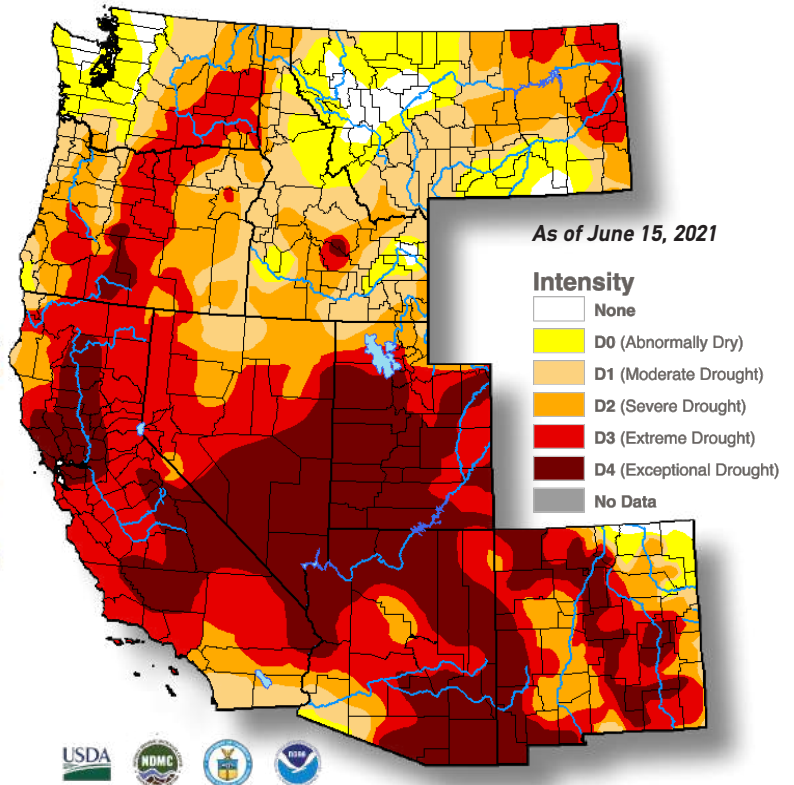
ehsAI

enablon

APP
sinarmas

PowerSecure

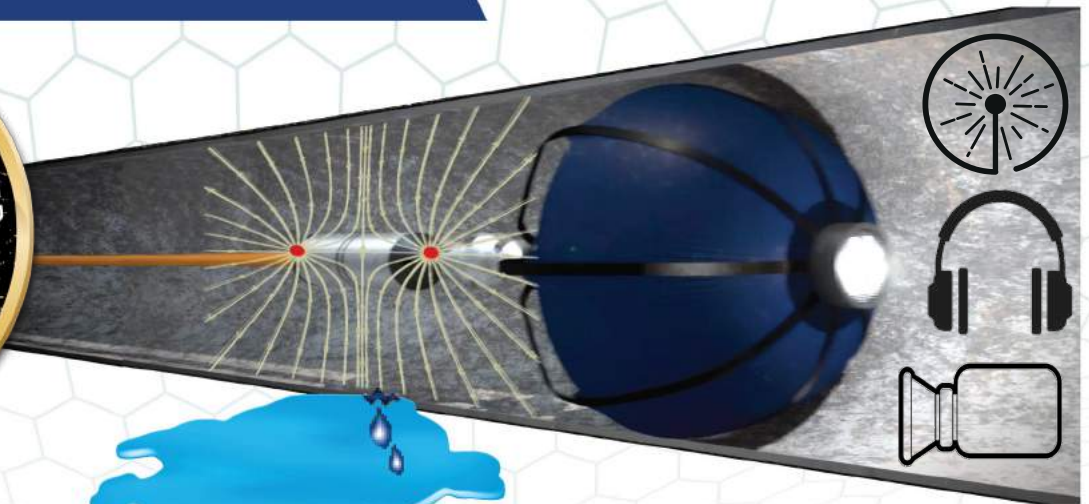
Alabama
Power



The Environment+Energy Leader Solutions Summit will take place virtually on July 20-21, 2021.

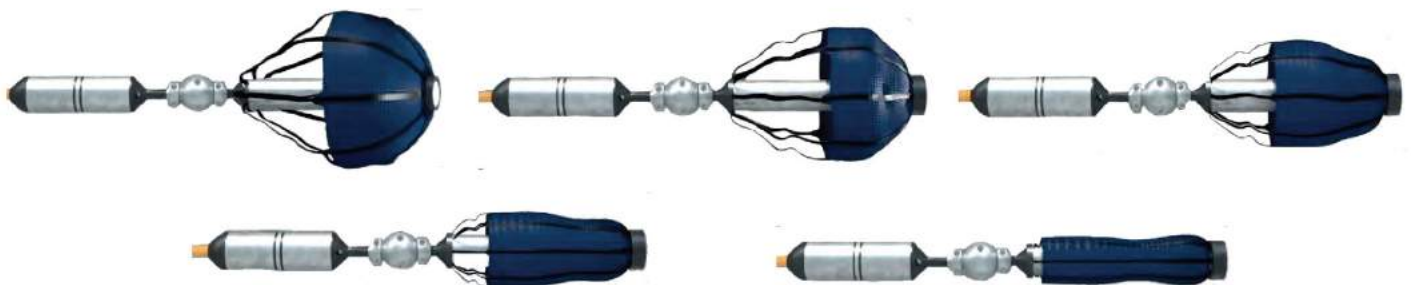


ELECTRO SCAN DELTA



NO IMPACT DUE TO PRESSURE, NOISE, GROUNDWATER, PIPE MATERIAL, OR CUSTOMER USAGE.

Condition	Performance
Features	Low Voltage Conductivity FELL, CCTV, Acoustic Hydrophone, Pressure Sensor
Pipe Diameters	3-60 inches (76-1500mm)
Pressure	ZERO to 12 bar (174 psi)
Temperatures	41-86° F / 5-30° C
Common Launch Points	Air Release Valves, Blow Off Valves, Gate Valves, Hot Taps, Hydrants, and Meters
Flow Rate	Min. Flow Rate for Hydrochute Propulsion is 0.3m/sec. Pull-Through able to handle NO FLOW conditions.
Pricing	Per Day or Per Meter Based on Project Size, Access Difficulty, Insertion Points, Diameters, and Traffic Control
Pipe Lengths Per Survey	1km Recommended for CCTV. Up to 2km with specialised equipment.
Average Production	1-2 Pipe Sections per Day



* Integrated Acoustic lets utilities compare results with Conductivity, revealing what they are 'not' hearing



What the Judges Said About Electro Scan's DELTA?



“Electro Scan’s leak detection system ability to quantify leak severities (gallons per minute or liters per second) and leak location accuracy within 1cm or less is truly remarkable.”

“This service provides superior leak detection which can prevent environmental impacts before they happen by detecting leaks that can become worse and result in disasters at worst, or less costly repairs to prevent damage.”

“This product allows smart water utilities to initiate pipeline stewardship programs that can validate leakage reductions by comparing pre- and post-rehabilitation programs.”

“Success for this product is measured by quickly actionable results that can be used to prevent, remediate or generate repairs or rehabilitation.”

Chuck Hansen to Present July 20 & 21



6th Annual
**Environment
+ Energy
LEADER
Solutions Summit '21**
July 20-21, 2021
Virtual Conference



Chuck Hansen

***“The New Standard for
Leak Detection & Water Tightness
Testing for New & Rehabilitated
Pipelines”***

- +40 years in Water & Sewer Condition Assessment.
- Former Owner, HANSEN SOFTWARE (1980-2007).
- Multi-Patent Holder Condition Assessment Technology.
- Former Chair ASTM F36.2, Water & Sewer Inspection.
- ESG / Cleantech Private Equity Investor.
- Appeared on Last 2 CDs of Tower of Power playing Baritone & Bass Sax

Tues, July 20. 3:00PM Eastern

Wed, July 21. 3:00PM Eastern

WATER

**“Finding Leaks Missed
by Acoustic Sensors”**



WASTEWATER

**“Finding Leaks Missed
by CCTV & AI-CCTV”**

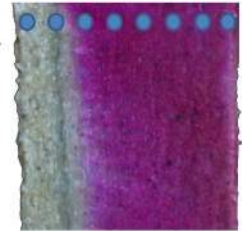
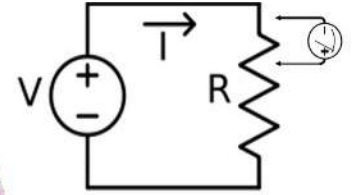
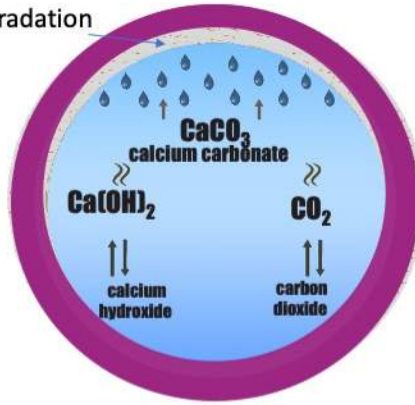


COMPETITIVE ADVANTAGE

Electro Scan Measures Full-Length 360-Degree Pipe Wall Thickness



AC Pipe Degradation



Pipe Wall Thickness

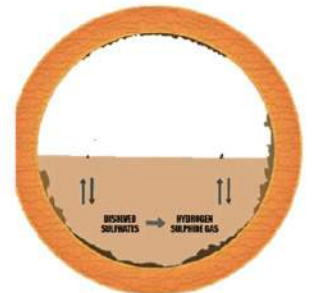
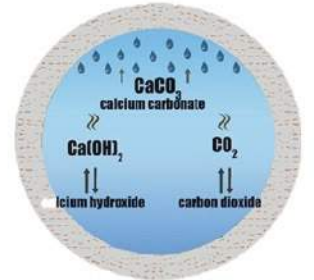
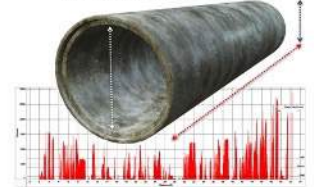


Phenolphthalein Stain Testing



**Wall Thickness Measured By Electro Scan.
Missed By Acoustic Sensors & CCTV Cameras.**

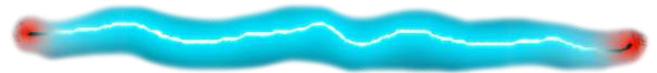
Asbestos Cement Pipe
Pipe Wall Thickness Measurement



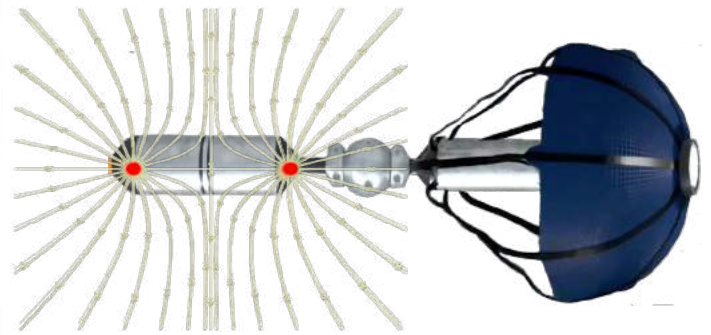
Reliance on Hearing a Leak



Measuring The Size of a Hole



Ohms Law + Orifice Equation



1cm Accuracy and LPS

Distributed Cracks

Localized Cracks

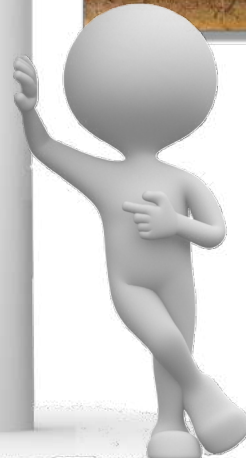


Joint Leakage

Customer Tap Connections



**Unambiguous
Unbiased
Unprecedented**





SEE LEAKS?



SNIFF LEAKS?

2	He
	Helium
	4.0026

2	← ATOMIC NUMBER - number of electrons - number of protons
He	← SYMBOL / NAME
4.00	← ATOMIC MASS - in AMU (atomic mass units)









HEAR LEAKS?



Sensory-based Systems Need Machine-Intelligent Upgrade.

Water Leak Detection Product Comparison

MULTI-SENSOR DELTA PROBE COMPETITIVE ADVANTAGES

Company	electro scan inc.		Aquam	Xylem/Pure/Wrc		Aganova	Ingu	Utilis
Features / Product	Delta	Trident	JD7	Sahara	SmartBall®	Nautilus	Recon	Satellite
Technology	Acoustic, CCTV, Conductivity	CCTV, Conductivity	Acoustic, CCTV	Acoustic, CCTV	Acoustic	Acoustic	Acoustic	Synthetic Aperture Radar
In-Pipe Connection	Tethered	Tethered	Tethered	Tethered	Free Flowing	Free Flowing	Free Flowing	
Device								
Visual Inspection with Camera	<input checked="" type="checkbox"/>	<input checked="" type="checkbox"/>	<input checked="" type="checkbox"/>	<input checked="" type="checkbox"/>	<input type="checkbox"/>	<input type="checkbox"/>	<input type="checkbox"/>	<input type="checkbox"/>
Joint Spacing	<input checked="" type="checkbox"/>	<input checked="" type="checkbox"/>	<input type="checkbox"/>	<input type="checkbox"/>	<input type="checkbox"/>	<input type="checkbox"/>	<input type="checkbox"/>	<input type="checkbox"/>
Leak Location – Accuracy 1cm	<input checked="" type="checkbox"/>	<input checked="" type="checkbox"/>	<input type="checkbox"/>	<input type="checkbox"/>	<input type="checkbox"/>	<input type="checkbox"/>	<input type="checkbox"/>	<input type="checkbox"/>
Leakage Severity – Expressed in Gallons per Minute or Litres per Second	<input checked="" type="checkbox"/>	<input checked="" type="checkbox"/>	<input type="checkbox"/>	<input type="checkbox"/>	<input type="checkbox"/>	<input type="checkbox"/>	<input type="checkbox"/>	<input type="checkbox"/>
Finds & Measures Leaks in Plastic Pipe	<input checked="" type="checkbox"/>	<input checked="" type="checkbox"/>	<input type="checkbox"/>	<input type="checkbox"/>	<input type="checkbox"/>	<input type="checkbox"/>	<input type="checkbox"/>	<input type="checkbox"/>
Pressurised Water & Gravity Sewers	<input checked="" type="checkbox"/>	<input checked="" type="checkbox"/>	<input type="checkbox"/>	<input type="checkbox"/>	<input type="checkbox"/>	<input type="checkbox"/>	<input type="checkbox"/>	<input type="checkbox"/>
Wall Thickness for Cement Asbestos	<input checked="" type="checkbox"/>	<input checked="" type="checkbox"/>	<input type="checkbox"/>	<input type="checkbox"/>	<input type="checkbox"/>	<input type="checkbox"/>	<input type="checkbox"/>	<input type="checkbox"/>
Able to Find Leaks With 'NO FLOW'	<input checked="" type="checkbox"/>	<input checked="" type="checkbox"/>	<input type="checkbox"/>	<input type="checkbox"/>	<input type="checkbox"/>	<input type="checkbox"/>	<input type="checkbox"/>	<input type="checkbox"/>
Repeatability of Leak Location +2years	<input checked="" type="checkbox"/>	<input checked="" type="checkbox"/>	<input type="checkbox"/>	<input type="checkbox"/>	<input type="checkbox"/>	<input type="checkbox"/>	<input type="checkbox"/>	<input type="checkbox"/>

KEY ADVANTAGES

- No Lost Balls or Spheres. 100% Retrieval Since We're Tethered.
- No False-Positives from 'Hitting' the Pipe Wall like Acoustic. Not Possible With Ohm's Law.
- No Missed Leaks. We Find Them All.
- No Guessing 'Which Leak is Larger?' Each Has a Liters per Second or GPM.
- No High Pressure Needed. We're Pressure-Independent; Able to Scan 0-175 psi (12 bar).
- No Long Wait for Reports. Data is Available in Minutes!
- No Estimated Locations or Ranges. Pinpoint Locational Accuracy of 1cm (0.4in).
- No Late Night / Early Morning Testing. Ambient Noise & Customer Pipe Usage Is Not a Factor.
- No Effect from High Groundwater Surrounding Pipes. Electro Scan Measures Size of Hole.
- No Need to Increase Pipe Pressure to Hear Leak. Electro Scan Is Non-Acoustic.

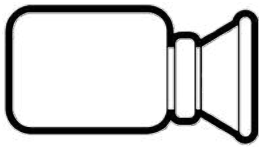


MULTI-SENSOR TRIDENT PROBE

Pressurized Water Main Leak Detection.
Finding & Measuring Leaks in GPM or LPS.



ELECTRO SCAN



CCTV

NEW
PRODUCT



Condition	Performance
Probe Sensors	Low Voltage Conductivity FELL and CCTV
Pipe Diameters	4-10 inches (100-255mm)
Pressure	0 to 160 psi (11 bar)
Temperatures	5-30°C, 41-86°F
Flow Rate	Push Cable able to handle flow or no-flow conditions
Pricing	Per Day or Per Meter Based on Total Project Size
Launch Points	Hydrants, Air Release Valves, Blow Off Valves, Gate Valves, Hot Taps, Meters
Pipe Length Per Survey	Up to 400ft (120m) in either direction from access
Construction	High impact ABS & powder-coated, zinc-plated mild steel
Dimensions (Length x Width)	5 inches x 1.6 inches
Camera Features	Display: 10.1", 1280 x 800 HD color TFT Storage: Internal 128Gb, USB flash storage supported Power Options: Mains Input (100-240 VAC), DC Output (16 VDC) or Built-In Battery (4S2P) Focal Range: 10mm to ∞ Active Pixels: 768 x 492 (NTSC) / 765 x 582 (PAL) LED Luminance: ≥ 208 Lumens Resolution: ≥ 460 TVL

Electro Scan Inc. Adds Line Location to Leak Detection

Leaks Expressed in Gallons Per Minute or Litres Per Second, And Now GPS Location.



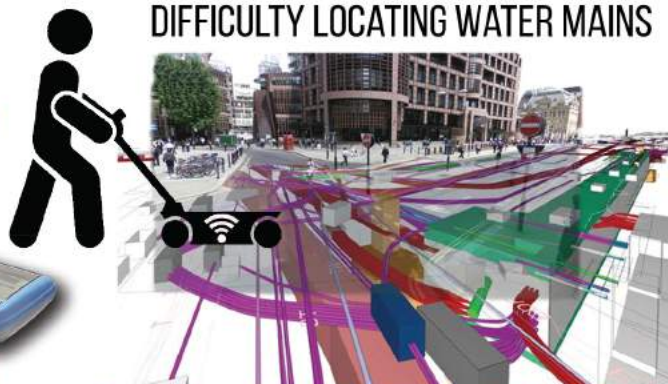
Finally, Actionable 'Leak Location' Results Without Ever Leaving The Field!

Electro Scan Answers The Challenge

Water Mains That Can't Be Found? Leaks That Can't Be Heard?



DRAWBACK OF GROUND PENETRATING RADAR:
DIFFICULTY LOCATING WATER MAINS



Electro Scan In-Pipe Intelligent Platform Embeds Sonde

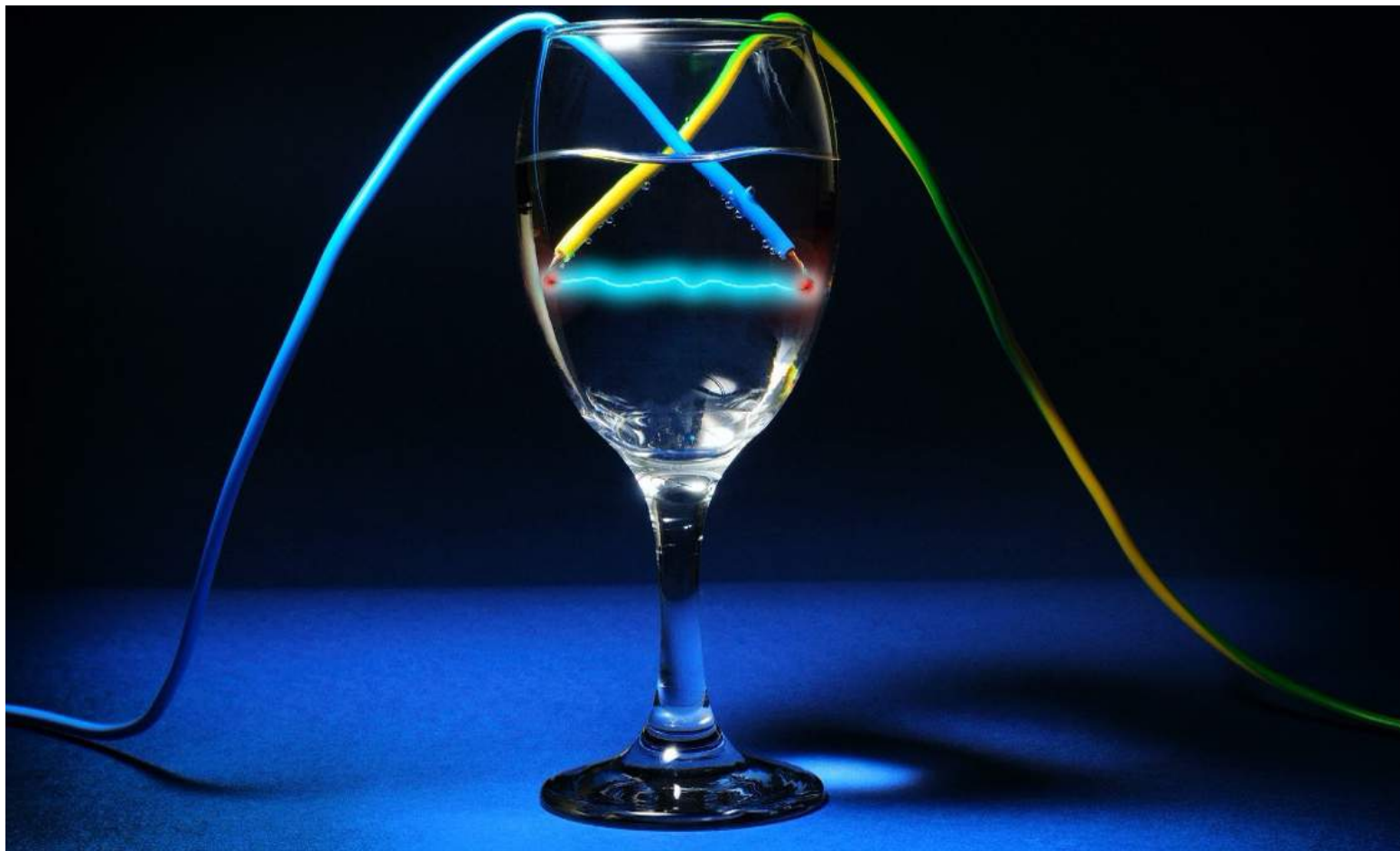


Radio-Based
Sonde



*Fully Integrated CCTV, FELL, LINE
LOCATION in Pressurized Lines.*

Science of Electro Scan



SEWER

WATER

DELTA

TRIDENT

SWORDFISH

APPROVED

APPROVED

3 inches or 76.2mm Pipe Diameter

ES-38 Probe

electro scan (uk) limited

YLI3 DMU

Multi-Sensor Leak Detection for Pressurized Pipes

Machine-Intelligent Water Leak Detection Technology

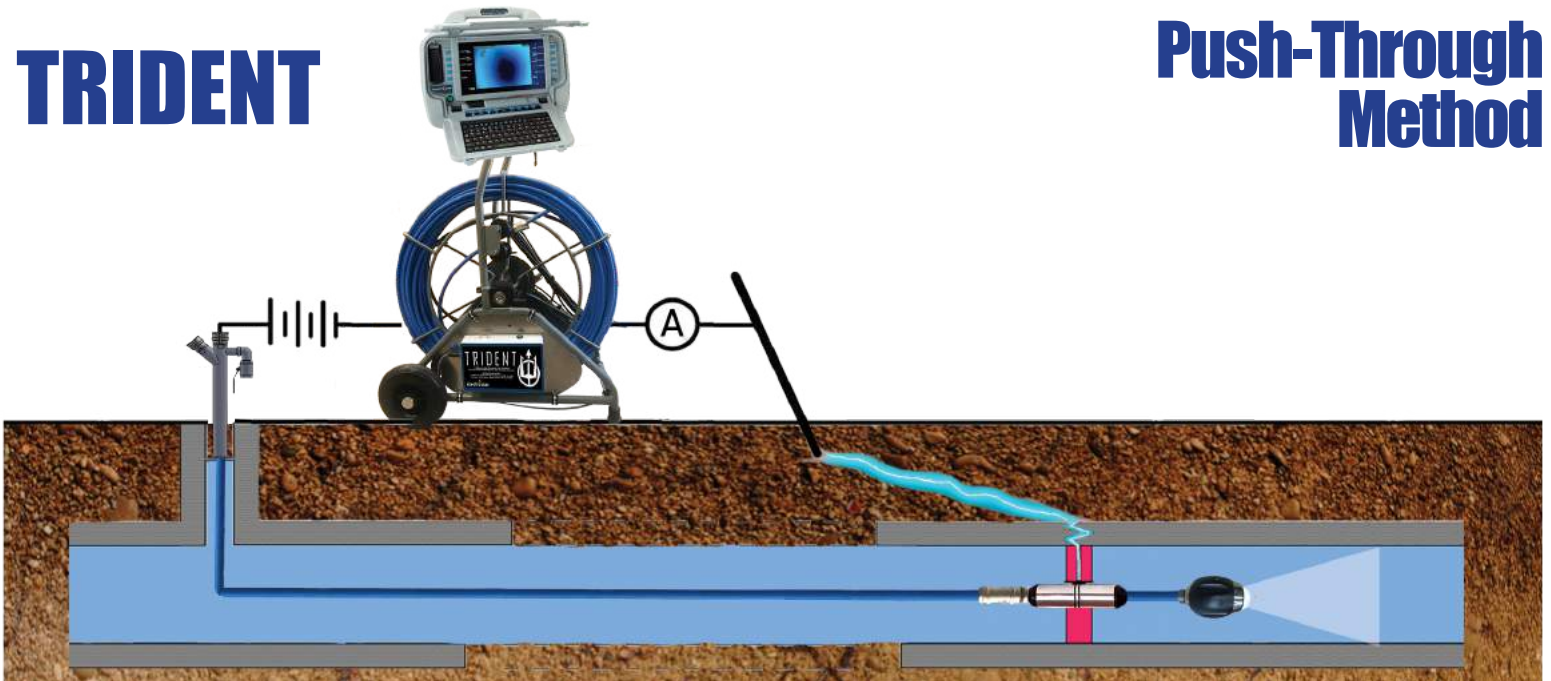
electro scan

Every drop of water counts.

And, Field Operations.

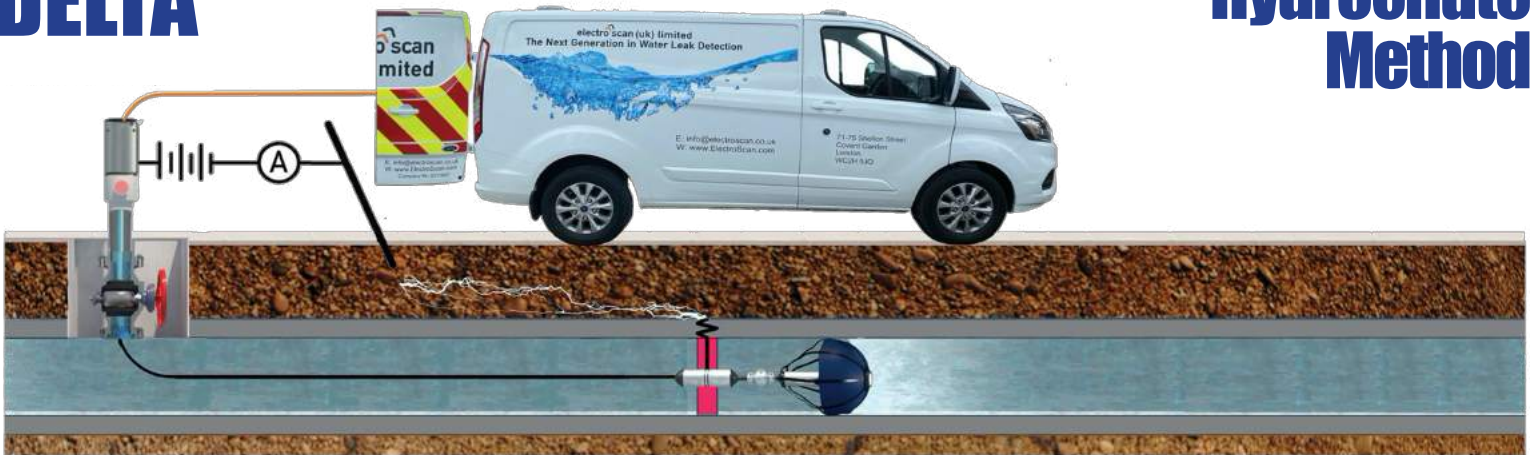
TRIDENT

Push-Through Method



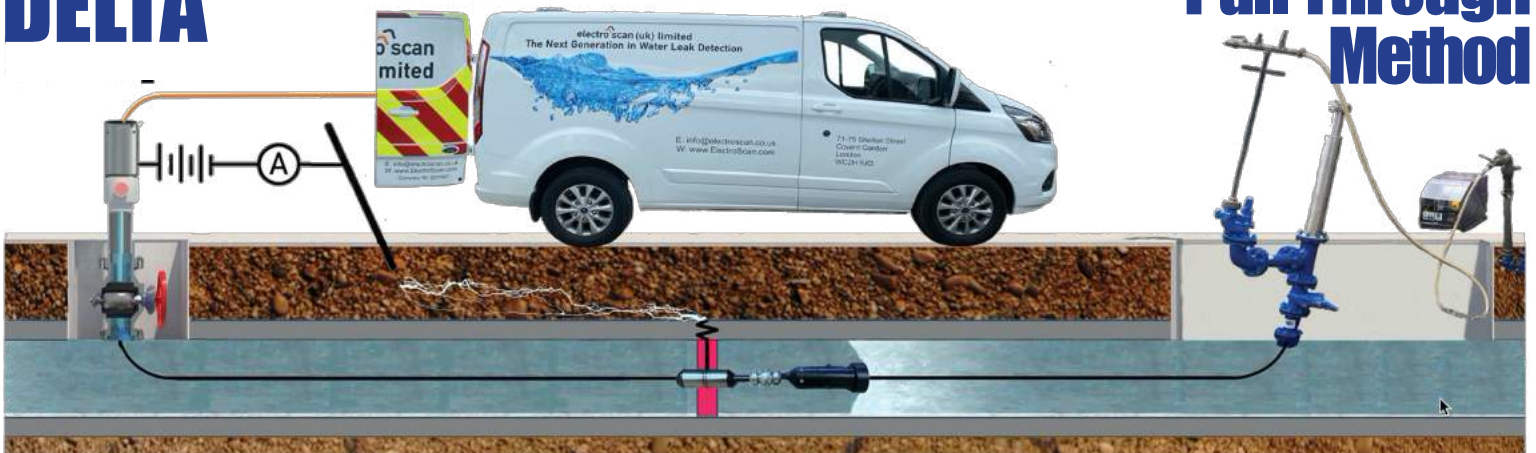
DELTA

Hydrochute Method



DELTA

Pull Through Method



TRAINING CENTER

Sacramento, Calif.

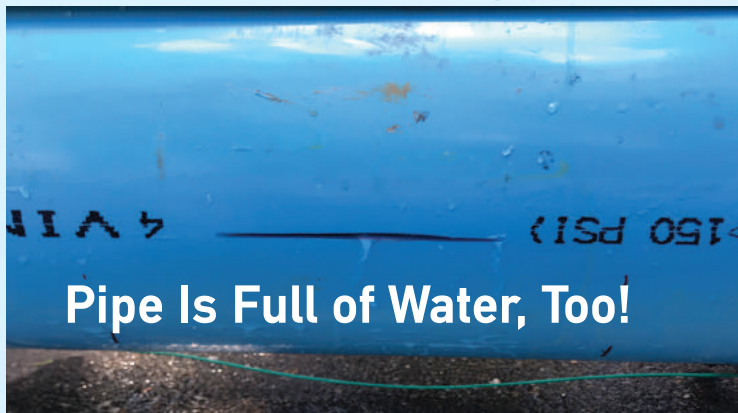




AUTOMATIC REPORTING



Acoustic Sensors Miss Leaks That Low Pressure Conceals





Follow Electro Scan on LinkedIn!



Chuck Hansen



BRITISH UV-CURED CIPP APPROVED BY CCTV CAMERAS WITH LEAKS.*



What's In?

**Same Day
Testing of
CIPP as
Watertight
Using
Electro
Scan**



**Approving
CIPP that
Leak Using
CCTV
Cameras**

What's Out?



*** MISSED BY ACOUSTICS.**

BRITISH FIBERGLASS UV-CURED PIPE APPROVED BY CCTV WITH MAJOR LEAKS.*

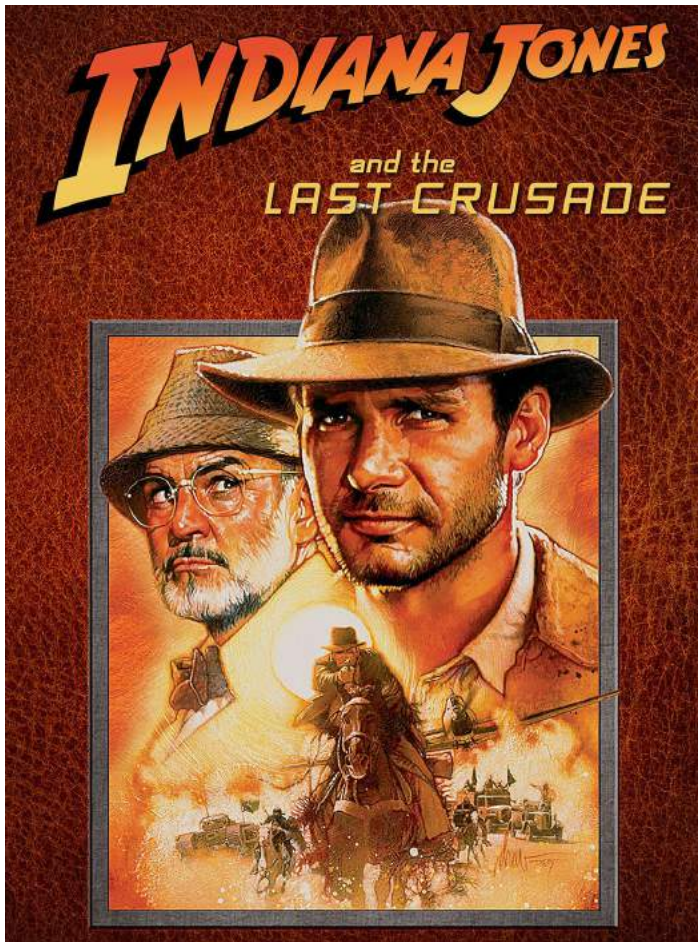


The Holy Grail of Leak Detection: What is the Gallon per Minute for a Water Leak?

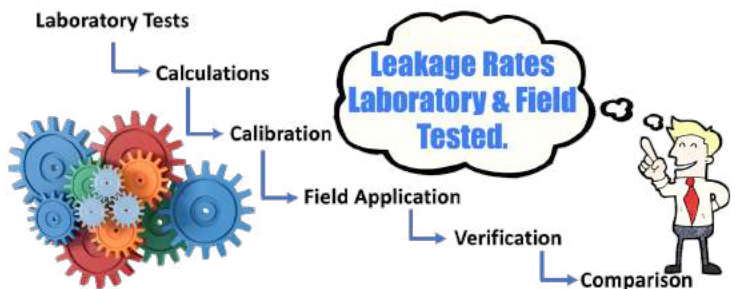
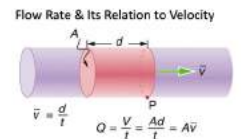
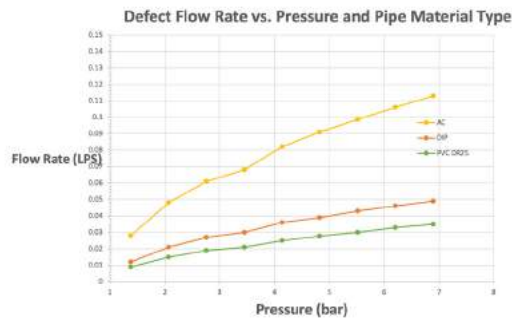
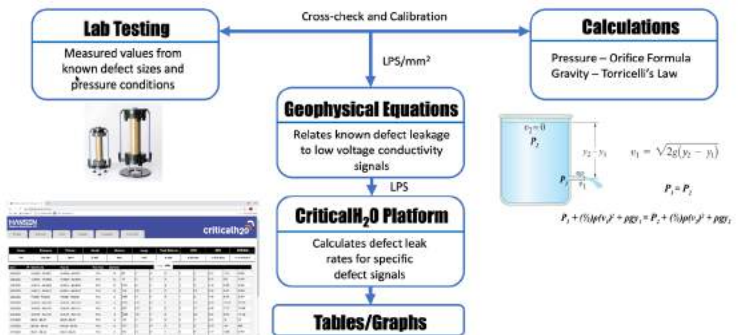
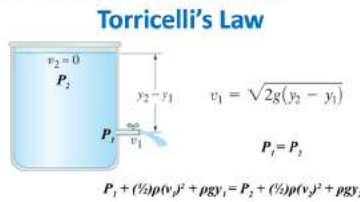


“The search for how to detect leaks & express them in Liters per Second has eluded the water industry for centuries, until Electro Scan discovered the secret.”

– Chuck Hansen

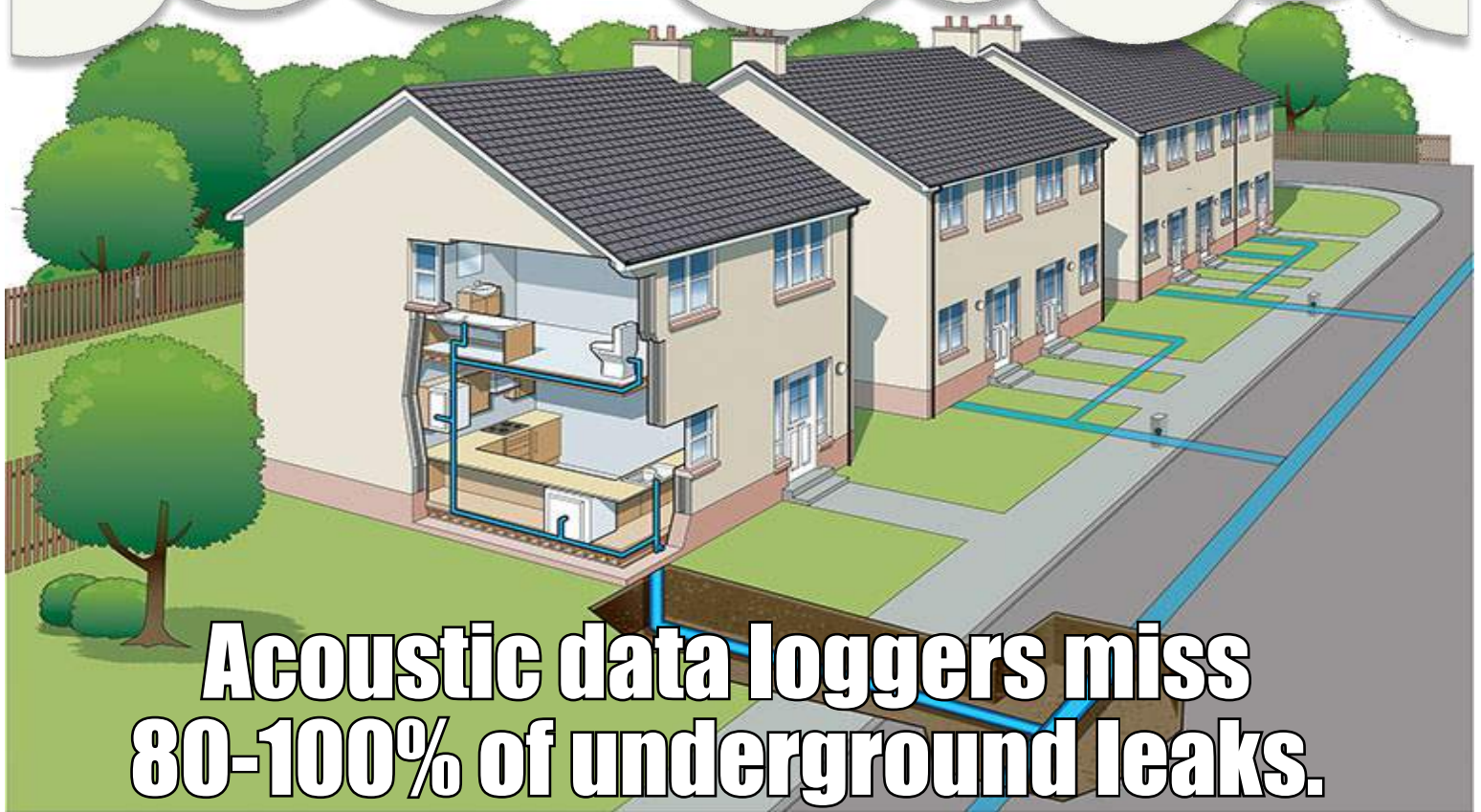


How GPM is Calculated?

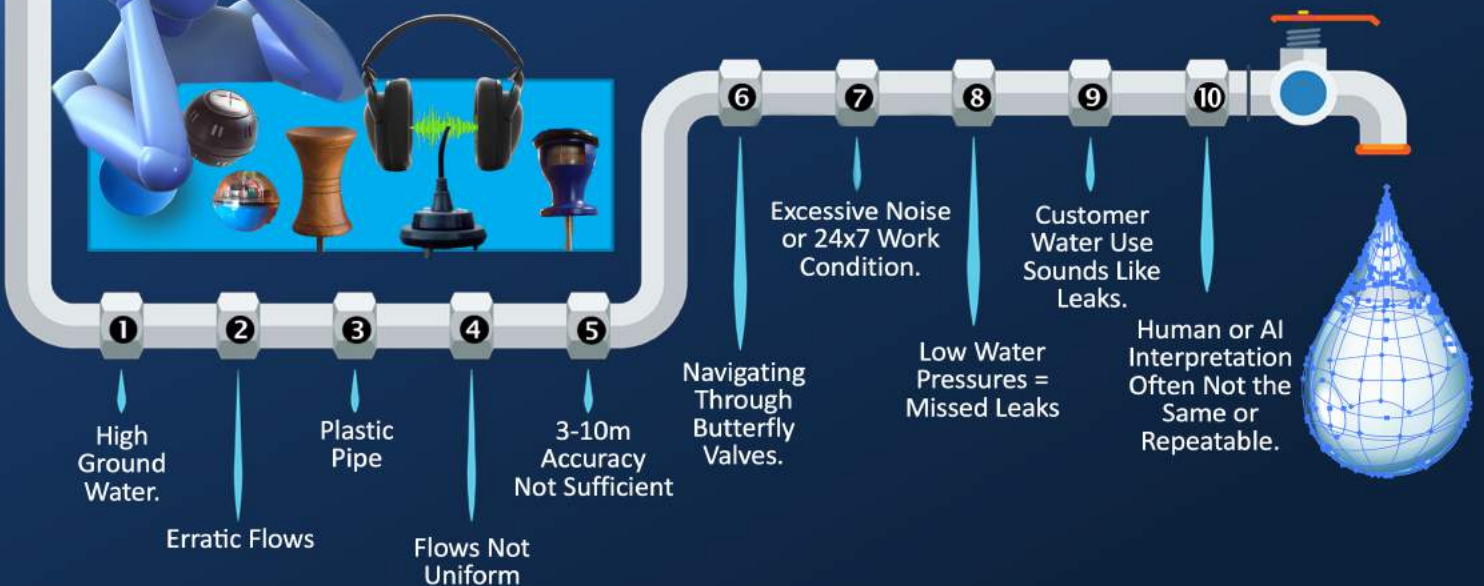


All leaks in pipe segments evaluated using the same criteria.

Water Leakage



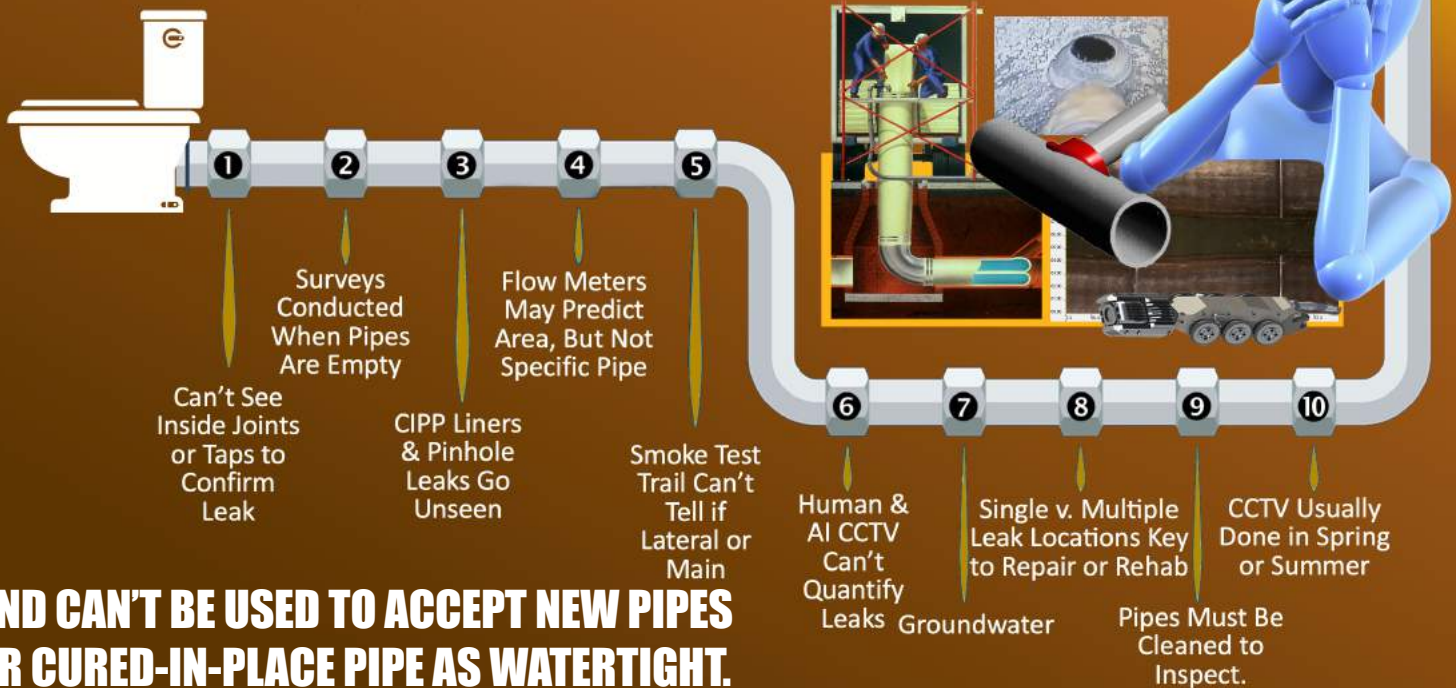
WHY ACOUSTIC MISSES SO MANY LEAKS? AND CAN'T BE USED TO ACCEPT NEW PIPES AS WATERTIGHT.



Sewer Overflows

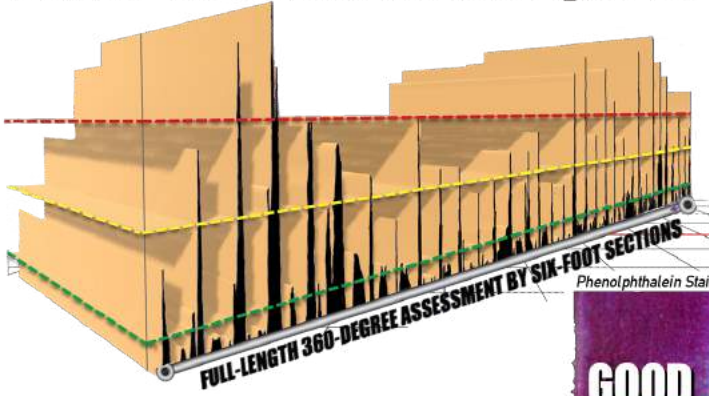


WHY CCTV MISSES SO MANY LEAKS?



What's In?

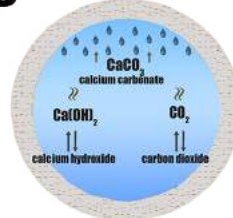
Asbestos Cement (AC) Pipe Testing



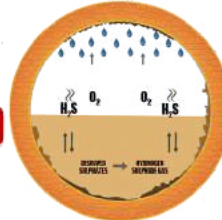
Phenolphthalein Stain Testing

GOOD **BAD**

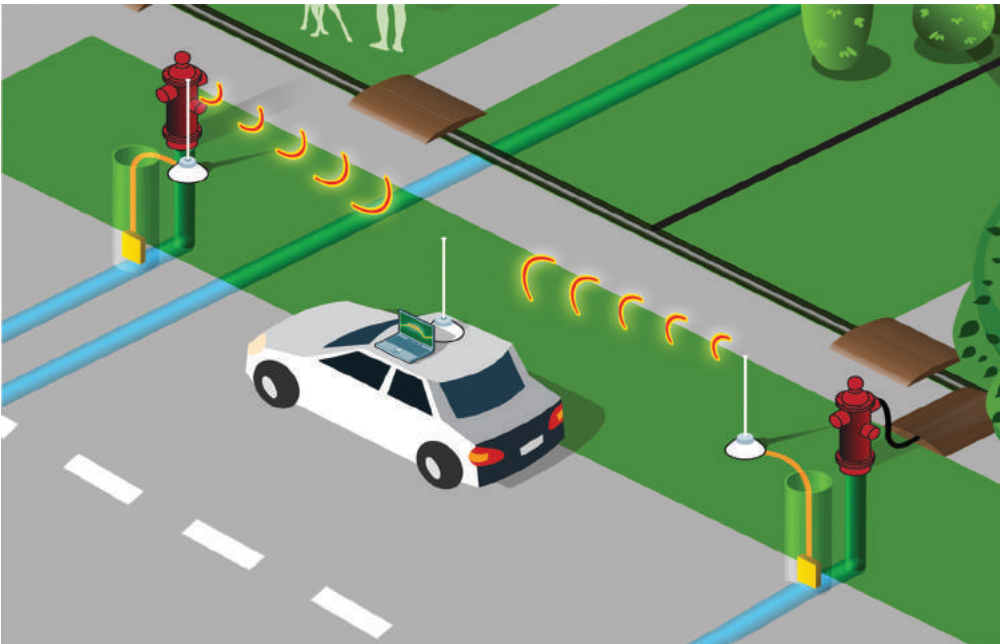
WATER



WASTEWATER



What's Out?



POSSIBLE AVERAGE WALL THICKNESS USING ACOUSTIC WAVES

THE TOP TEN LIST

electroscaninc.

Ways That Electro Scan Overcomes Drawbacks of Acoustic Listening Devices

Common Challenges

10 Household Usage



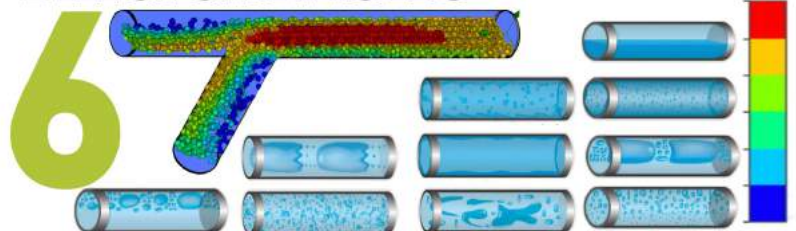
9 Groundwater



7 Coupling & Repairs



Different Flows



8 Pipe Size & Material



5 Street Noise



4 Trenching & Bedding



3 Air Pockets

Air Bubbles

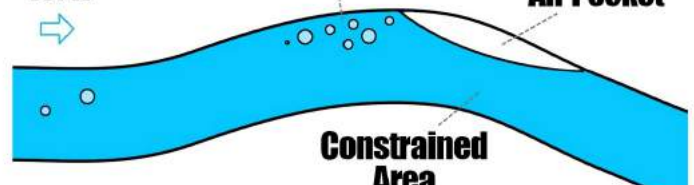
Air Pocket



Water Flow

Air Bubbles

Air Pocket



2 Judgment



Acoustic Misses 80% of Leaks.

“Electro Scan Said What?”

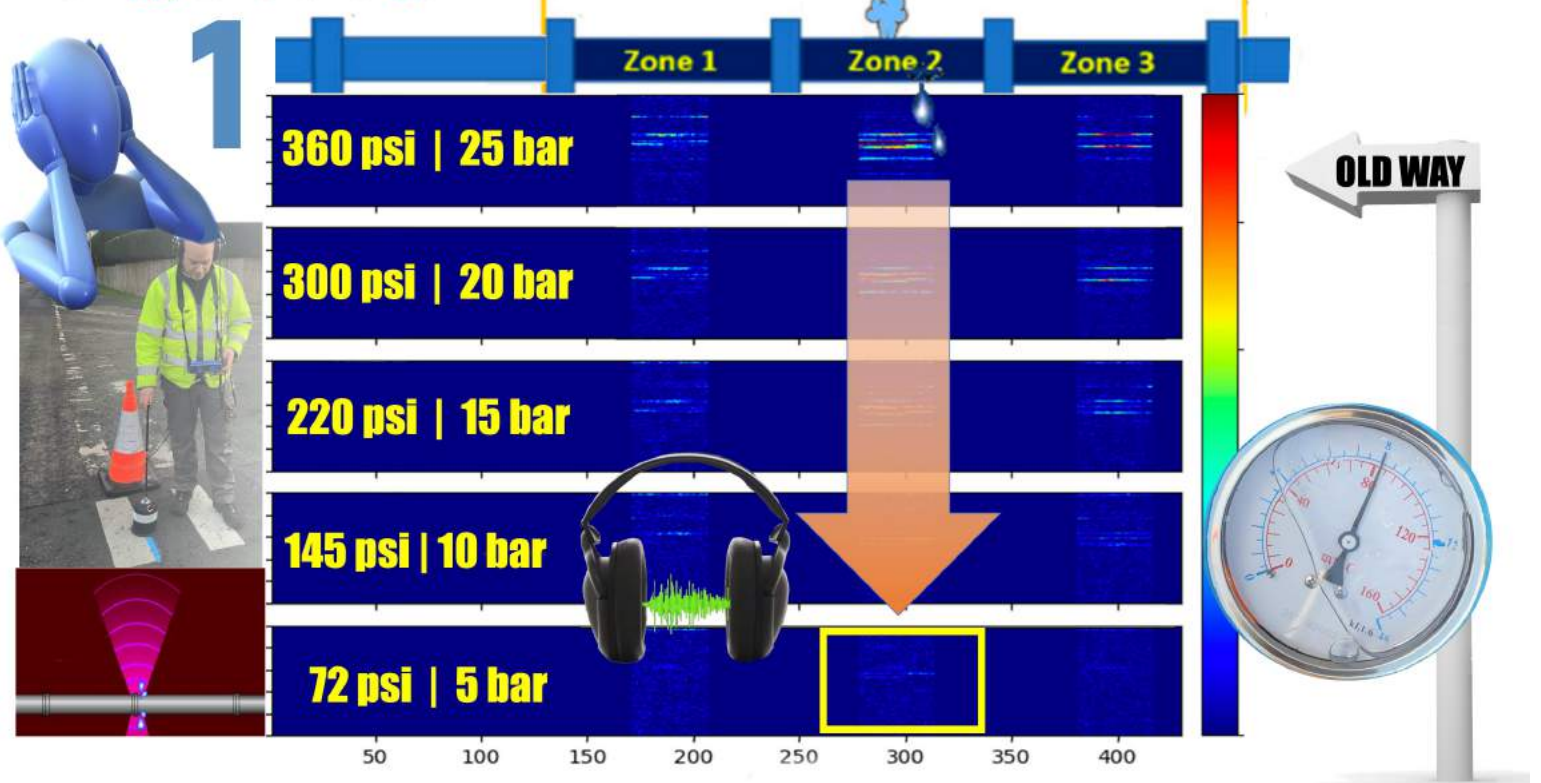
“That Acoustic Data Loggers Miss 90-100% of All Leaks?”

“But, That’s Our Whole Buiness!”



The Biggest Reason That Acoustic Sensors Can't Find or Measure Leaks?

The Biggest Challenge



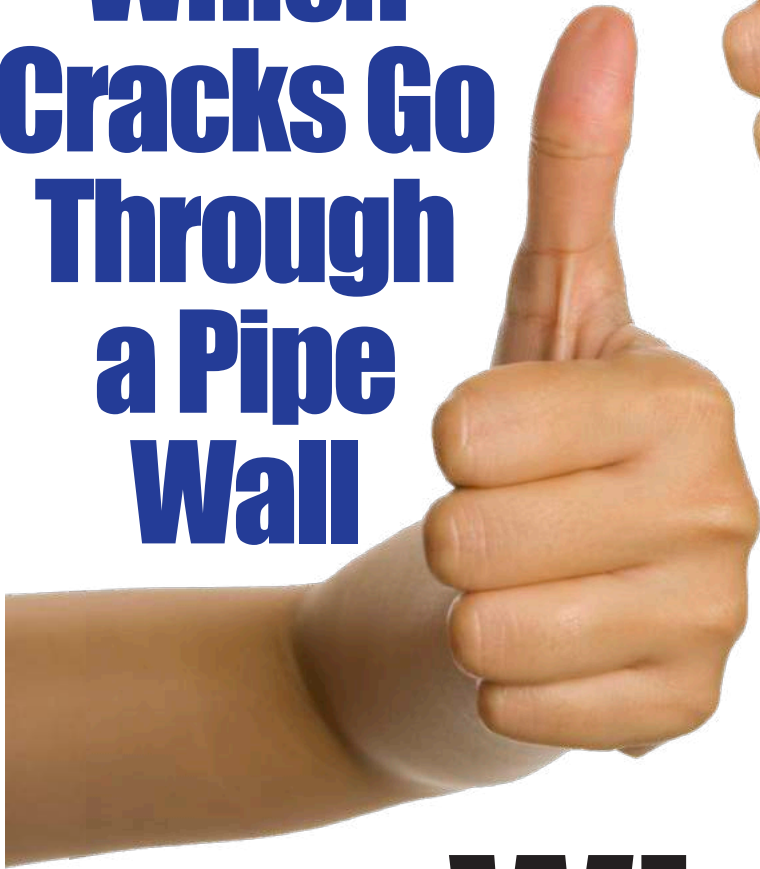
50 100 150 200 250 300 350 400

CCTV ONLY 'SEE' 50% OF A PIPE, AND CAN'T TELL WHERE OR HOW MUCH WATER LEAKS INTO OR OUT OF A PIPE.



What's In?

**Knowing
Which
Cracks Go
Through
a Pipe
Wall**



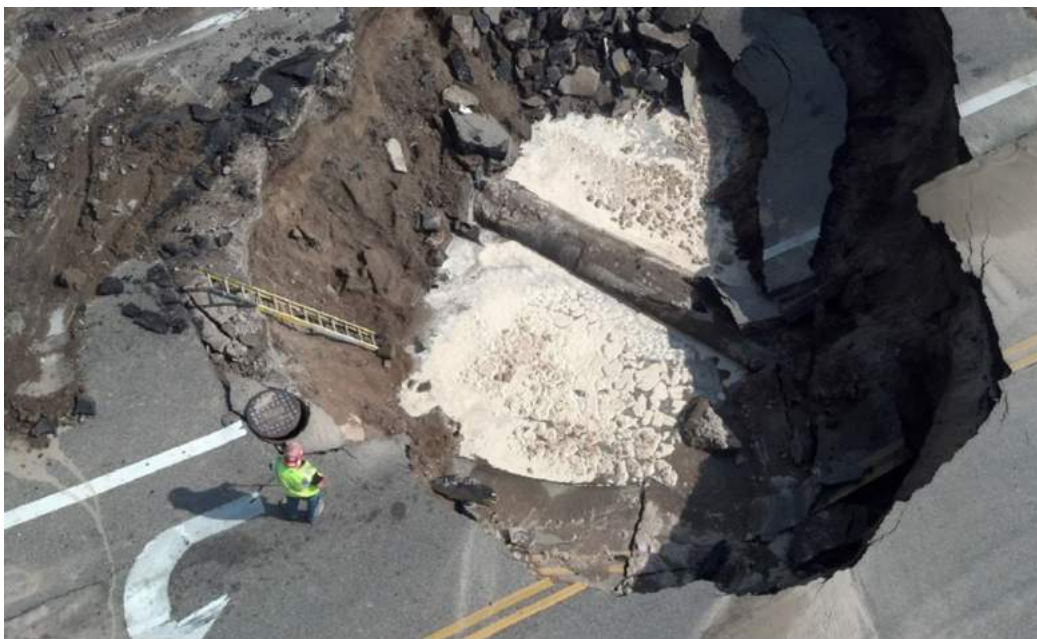
**AI & Visual
CCTV
That Don't
'See'
Leaks**

What's Out?

Untethered Acoustic Ball Misses Leaks And, Catastrophic Failures Follow

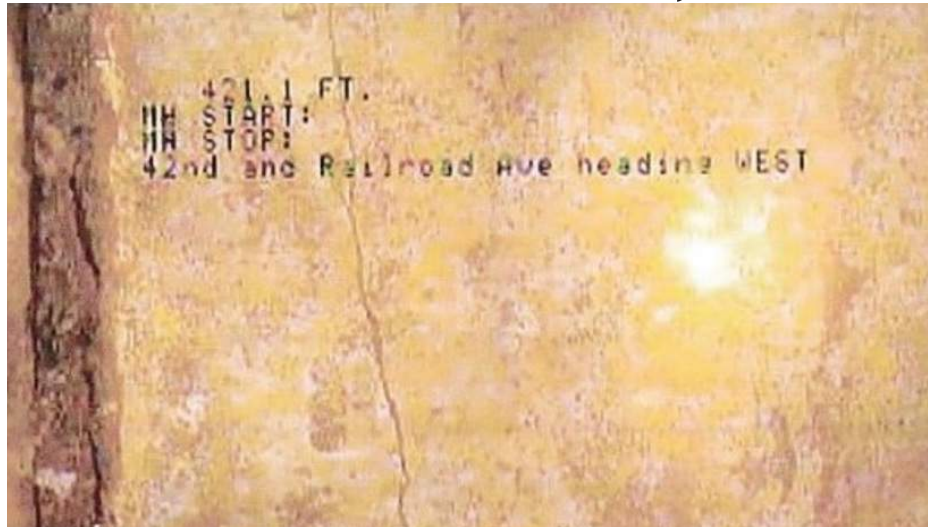


Rupture #1 & #2 – After Acoustic Ball Found No Leaks





Ruptures Cost Over \$2 Million, Each



CCTV of dewatered pipe showed major radial cracks that were not identified as 'LEAKS' using Untethered Acoustic Ball.

Electro Scan automatically identifies & quantifies leaks from cracks, without dependence on pipe pressure or noise.

Electro Scan – By Pipe Material

ABS
ACP
BRK
CMLSP
CON
CIPP
DIP
FRP
FRPM
GRP
HDPE
ORP
PB

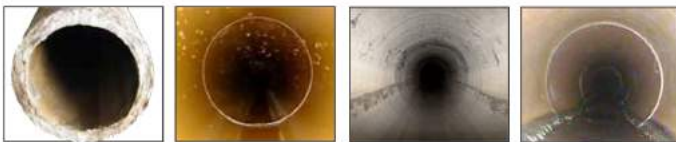
Acrylonitrile-butadiene-styrene
Asbestos Cement Pipe
Brick
Cement Mortar Lined Steel
Concrete
Cured-In-Place Pipe
Ductile Iron (w/Protector 401)
Fiberglass Reinforced Pipe
Fiberglass Reinforced Polymer
Glass Reinforced Pipe
High Density Polyethylene
Orangeburg Pipe
Polybutylene

PCCP
PE
PE
PF
PP
PVC
RCP
RPM
RTR
SIPP
SPR
TC
VCP

Prestressed Concrete Cylinder Pipe
Polyethylene
Pitch Fiber Pipe
Plastic Pipe
Polyvinyl Chloride
Reinforced Concrete Pipe
Reinforced Plastic Mortar
Reinforced Thermosetting Resin
Spray-in-Place Pipe
Spiral Wound Pipe
Terracotta or Clay Pipe
Vitrified Clay Pipe



PRE-REHABILITATION



Asbestos Cement Pipe

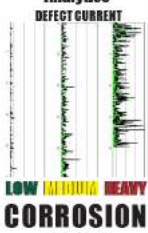
High Density Polyethylene Pipe

Prestressed Concrete Cylinder Pipe

Vitrified Clay Pipe

Electro Scan FELL is unique in its ability to geometrically map the remaining wall, i.e. corrosion of ACP.

Finding & Measuring Pipe Corrosion Using Electro Scan's Patented Data Analytics



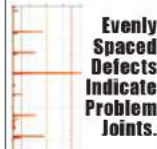
LOW MEDIUM HEAVY CORROSION DEFECT FLOW

As demonstrated by independent benchmarks, since acoustic and transient pressure sensors are unable to provide detail geometric assessments of pipe walls, and therefore unable to estimate remaining pipe walls, Electro Scan represents a game changing solution to assess & prioritize ACP.

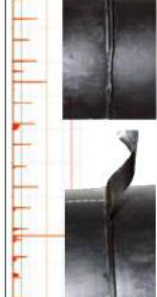


Poor mechanical or fused joints are the Achilles heel of HDPE, and not seen by CCTV cameras or heard by acoustic data loggers or sensors. But, found & quantified by FELL in accordance with ASTM F2550.

Evenly Spaced Defects Indicate Problem Joints.

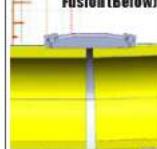


LOW MEDIUM HEAVY CORROSION DEFECT FLOW



What Electro Scan Finds Most?

Inadequate Clamping or Restraint during Fusion (Below)



Electro Scan represents the only technology able to reliably & consistently find & measure leaks in GPM.

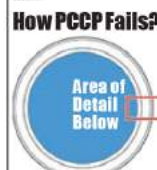
While other devices may attempt to locate corroded wire mesh that may or may not indicate a weakness in the pipe wall, Low Voltage Conductivity represents a game-changing solution to provide unbiased leak locations & severity for each defect.



ELECTRO SCAN ASSESSES 100% OF JOINTS

Superior to acoustic and electromagnetic sensors, Electro Scan's Low Voltage Conductivity detects leaks other technologies miss.

How PCCP Fails?



It doesn't matter whether you evaluate VCP from the outside or inside of a pipe, CCTV, Laser, LIDAR, Sonar, GPR, or Acoustic, are not able to detect or measure defect flows.

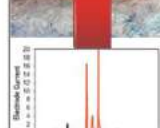
ELECTRO SCAN ASSESSES 100% OF JOINTS



ELECTRO SCAN ASSESSES 100% OF JOINTS

Electro Scan's FELL is the only technology, representing a Non-Destructive Test (NDT) able to locate a 90° pipe bend to locate a pathway for water to enter or exit a pipe.

By measuring the change in current and the amount of flow, the size of the opening can be computed and translated into an estimated GPM.



Open trench evaluation of FELL located defects missed by CCTV, exactly showed three matching leaks due to fittings that were never tightened. Just one of over a dozen tests proving FELL superiority.

POST-REHABILITATION



Cured-In-Place Pipe

Grout

Spray-In-Place Pipe

Spiral Wrap Pipe

CIPP liners may not be watertight and defects not seen by certified operators using CCTV cameras. As a result, ASTM F2550 should be added to CIPP specifications to ensure pipe quality & integrity.

LEAKS



PINHOLES



SOAKAGE



RECOMMENDED USE:

- To Find & Quantify Leakage From
- Accelerant Burns
- Accidental Cuts
- Bad Service Reconnect
- Bad Lateral Liners
- Blisters
- Delamination
- Defective Epoxy
- Equipment Damage
- Foreign Objects
- Pinholes
- Poor Curing
- Overcooking
- Stretching
- Top-Hat Defects
- Wet-Out Failures
- Wrinkles, including: Buckling, Fins, Folds, Lifts, and Ridges

FELL is now preferred over using traditional packers to test joints for water tightness, due to FELL's Non-Destructive Testing (NDT) of joints, laterals, and cracks.

DEFECTIVE (NEW) SIPP



Unlike air testing, FELL does not force any added pressure on joints or laterals. Since air testing can open joints, shift pipes, and even temporarily correct out-of-round conditions in plastic pipes as areas around joints are inflated, packers are no longer recommended for testing the quality of joints or laterals.

GOOD GROUT



SIX-MONTH OLD DEGRADED GROUT

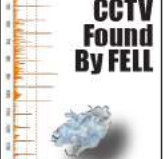


STILL OK.

1. All Pre-Grouted Pipes.
2. Post-Grouted Pipes, 6-12 Months After Grout to Detect Drying or Shrinkage.
3. Prior to Warranty Acceptance.

Locking individual wraps is key to any successful Spiral Wrap Pipe project, with problems not identified by CCTV.

DEFECTS OK'd BY CCTV FOUND BY FELL



RECOMMENDED USE:

1. Pre-SIPP.
2. Post-SIPP All Liners.
3. Prior to Warranty Acceptance.

In contrast, Electro Scan FELL inspection can find defects to individual couplings.

RECOMMENDED USE:

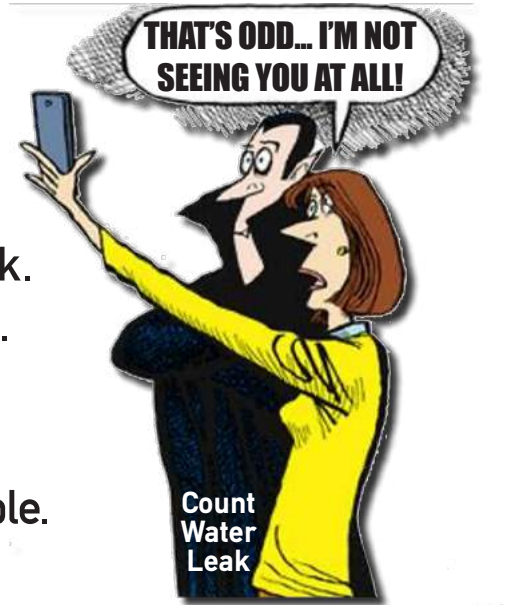
1. Pre-Spiral Wrap.
2. Post-Spiral Wrap.
3. Prior to Warranty Acceptance.

What Utilities Hate to Hear About Acoustic Data Loggers



Common Reasons Acoustic Sensors Miss Leaks

1. Ambient noise interferes with readings.
2. Lower pressures contribute to missed leaks.
3. Requires third-party data interpretation.
4. Unable to accurately assess HDPE, PE, PVC pipes.
5. Customer water usage 'sounds' the same as a leak.
6. May report ZERO LEAKS, where WATER LEAKS found.
7. Lack of repeatability by crew, by equipment.
8. Leak size difficult to determine - No GPM or LPS.
9. Numerous FALSE-POSITIVES make results unreliable.
10. Defects at repair clamps often missed.
11. Can't certify Cured-In-Place Pipe (CIPP) liners as watertight.
12. Loose or worn components cause poor readings.
13. Different backfill materials affect results.
14. Special training required for crews.
15. Lengthy reporting times.
16. Unable to differentiate leaks at Customer Tap, Joint, or Pipe Wall.
17. Untethered balls banging on pipe wall = FALSE-POSITIVE.
18. Misses silent / undetected leaks = FALSE-NEGATIVE.
19. Air pockets cause false readings.
20. Different results routinely occur with different pipe diameters.
21. Variable water tables affect acoustic results.
22. Poor assessments lead to bad repair decisions.
23. Can't certify new pipe installations or repairs as watertight or leak-free.
24. Total cost per leak rarely factors in cost of unsuccessful leak detection.
- and
25. Everybody knows that water surrounding the outside of a pipe creates a natural insulation that makes it almost impossible to 'hear' a leak.





SSIP

SAFETY
SCHEMES IN
PROCUREMENT

Services

Contract Services

Direct Services By Electro Scan (UK) Limited Staff

Technology Licensing

Licensing to 3rd Party Contractors
Equipment Provided, But Not Sold
to Perform Large Scale Projects



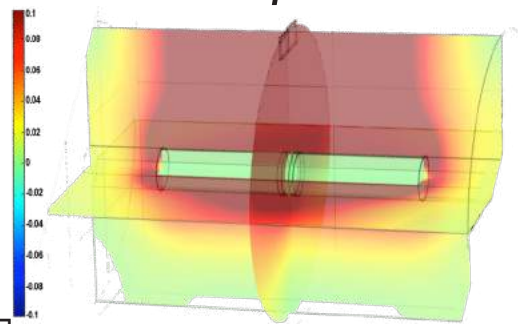
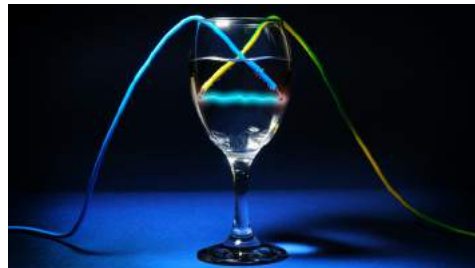
Clean Tech

“Electro Scan’s Focused Electrode Leak Location, is a Game Changing Technology”

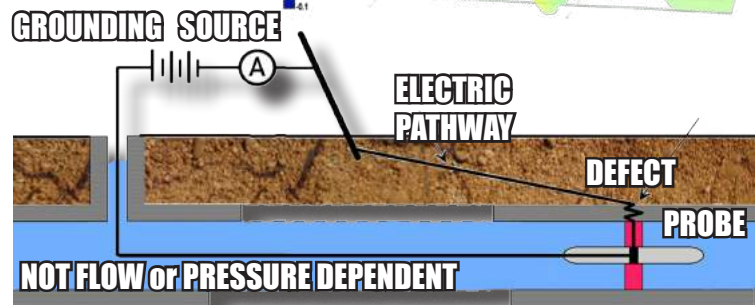


How Do We Find & Measure Leaks?

If a pipe leaks electricity, it leaks water. And can be measured in gallons per minute or litres per second.



Completing The Circuit Finds Every Leak!



Results independently calibrated using COMSOL Multiphysics®.



FELL FINDS LEAKS MISSED BY OTHERS



Acoustic Sensors

Helium or Smoke Testing



Conductivity



Dye Flood Testing



Sonar

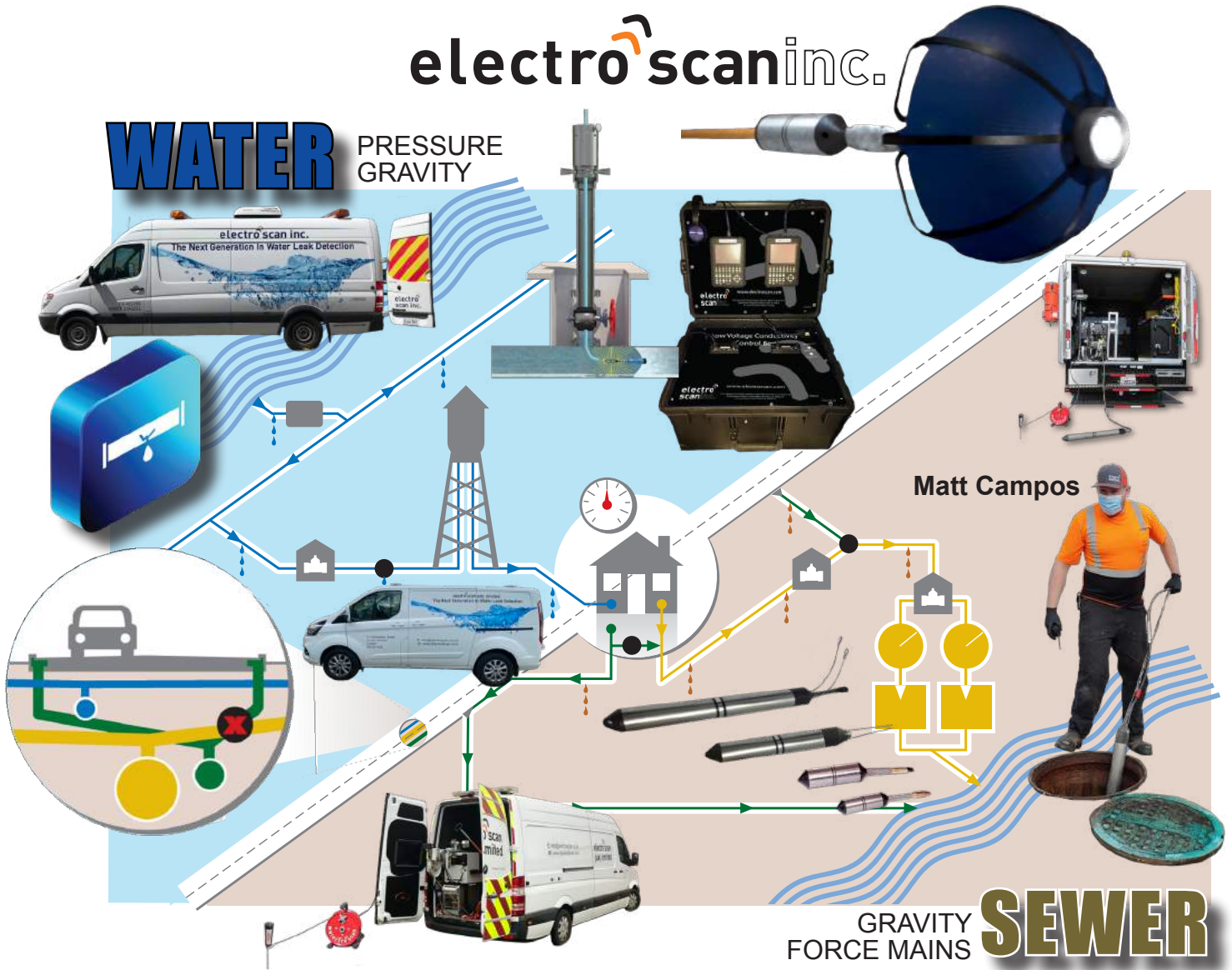
Survey Data Available in 10 Minutes of Less on Electro Scan’s global Critical H2O cloud platform.

No waiting days or weeks.

electro scan inc.

WATER

PRESSURE
GRAVITY



Matt Campos

GRAVITY
FORCE MAINS **SEWER**

**BEST
IN
CLASS**





CALIFORNIA
\$4.5 million CIPP Lining Project Shows Major Collapses 16-Months After Installation.

MISSOURI
6-Mile Post-CIPP Survey Finds Significant Defects in Liner Walls and at Connections.

TEXAS
Multiple Post-CIPP Assessments Show Major Leakage.

FLORIDA
30-Mile Post-CIPP Survey Finds Major Defects Approved by CCTV Inspection.

NORTH CAROLINA
Entire Town Inspected Using Low Voltage Conductivity to Rank Rehabilitation.

FRANCE
Major French Water Company Invites Electro Scan to Perform Field Trials Near Paris.

UK
UKSTT Selects Electro Scan as Best Project With Over a Dozen Projects Completed.

GERMANY
Electro Scan Participates in Major IKT CIPP Liner Study Working With WRc plc.

UAE
14-km Assessment of Pre- & Post-CIPP Using Electro Scan to Test & Certify Water-tightness of UV-Cured Liner.

JAPAN
JASCOMA Awards Electro Scan Inc. Water-tightness Certification.

AUSTRALIA
Major Water Utility Completes Electro Scan Benchmark Comparing CCTV & FELL.

SALES



UK & EU

Contact: Brad Weston
Director, UK Field Services
Email: brad@electroscan.com
Mobile: +44 7739 358611

North America

Contact: Mike App
VP, Business Development
Email: mike@electroscan.com
Mobile: +1 917 817 0090

Asia Pacific

Contact: Chuck Hansen
Tel: +61 08 8311 3950
Email: chuck@electroscan.com
Mobile: +1 916 275 2921



1745 Markston Road
Sacramento, California 95825
Tel: +1 916 779 0660
info@electroscan.com
www.electroscan.com

SERVICES



Worldwide

Contact: Carrisa Boudwin
VP, Marketing
Email: carissa@electroscan.com
Mobile: +1 917 817 0090

