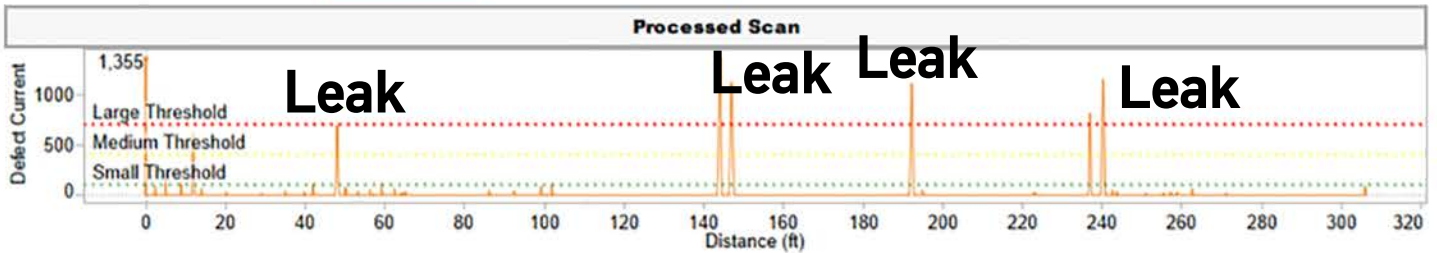


## Using Electro Scan to certify Post-CIPP Lining Projects.

### 1 CIPP Lining

Defect Count		Defects % of Scan Length		GPM Summary	
S	5	Small Defects	0.080%	Minor GPM Flow	1.21
M	2	Medium Defects	0.450%	Moderate GPM Flow	0.00
L	6	Large Defects	1.610%	Severe GPM Flow	55.11
		All Defects	2.140%	Total Gpm Flow	56.32
				Approx Flow All Defects Per Day	81,101
				Minor % of Total Flow	1.97%
				Moderate % of Total Flow	0.00%
				Severe % of Total Flow	98.03%

**NOTE:**  
Out of eleven (11) reinstated laterals, seven (7) appear to have substantial potential for infiltration.



### 2 Vitrified Clay Pipe with CIPP Repair

Defect Count		Defects % of Scan Length		GPM Summary	
S	70	Small Defects	2.530%	Minor GPM Flow	29.91
M	12	Medium Defects	0.710%	Moderate GPM Flow	24.63
L	8	Large Defects	0.900%	Severe GPM Flow	9.76
		All Defects	4.140%	Total Gpm Flow	64.30
				Approx Flow All Defects Per Day	92,592
				Minor % of Total Flow	46.52%
				Moderate % of Total Flow	38.30%
				Severe % of Total Flow	15.18%

**NOTE:**  
While initial CCTV indicated only a portion of this main needed repair, which appears water tight, the remaining portion of the pipe has substantial potential for infiltration.

