

# 2013 Product Innovation of the Year\*



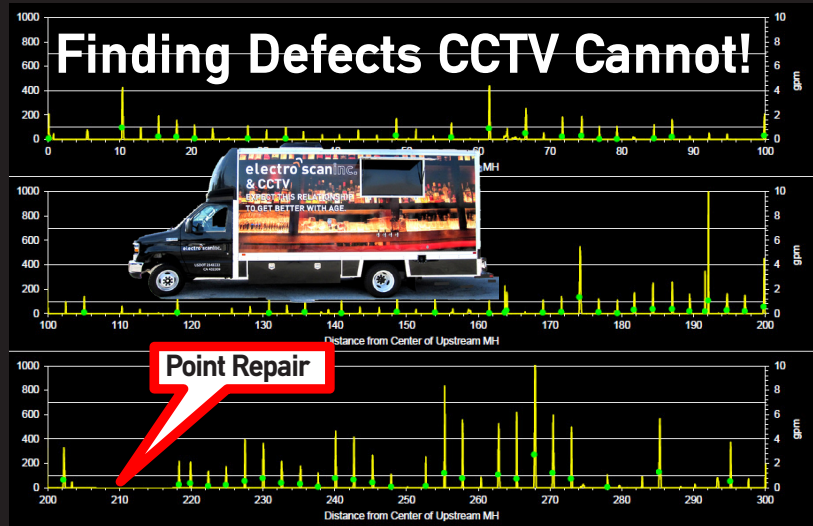
\* NASTT No-Dig Joseph L. Abbott, Jr. Award Recipient and WEFTEC's 2013 Conference Platinum Sponsor.

**NOT SEEN ON  
CCTV**

**If You Use  
CCTV to Find  
Infiltration,  
You Might  
Be Fixing  
The Wrong  
Pipe.**

**electro  
scaninc.**

1745 Markston Road  
Sacramento, Calif. 95825-4026  
Tel: 916 779 0660  
Fax: 916 779 0661  
Email: sales@electroscan.com  
Website: www.electroscan.com



(Above) A sewer agency used CCTV to locate a defect that was determined to require a Point Repair at 210 feet. A Point Repair was completed and the Contractor used CCTV to certify the repair. Then, the pipe was **Electro Scanned**.

**Good News:** The Point Repair was successful--no electrical readings!  
**Bad News:** The Sewer had numerous other defects not seen by CCTV.

## INFILTRATION SCORECARD

### How Do They Compare?

		CCTV	Electro Scan
1	Automatically Finds Potential Sources of Infiltration	N	Y
2	Automatically Finds Leaks Inside Joints	N	Y
3	Automatically Finds Leaks at Service Connections	N	Y
4	Automatically Finds Sources of Infiltration at Cracks	N	Y
5	Automatically Finds Leak Locations (within 0.4 in or 1 cm)	N	Y
6	Automatically Measures Size of Leaks (Est. GPM or LPM)	N	Y
7	Automatically Finds Defects That Leak from Bad Couplings	N	Y
8	Automatically Finds Defects That May Still Leak After Repairs	N	Y
9	Automatically Finds Defects That Leak in Re-Lining Projects	N	Y
10	Automatically Finds Defects After Service Re-Connections	N	Y
11	Automatically Finds Leaks, If Silt or Debris on Bottom of Pipe	N	Y
12	Able to Conduct Inspections, If Sewer Pipe Is Full of Water	N	Y
13	Able to Determine Size of Potential Leak, If Roots Are Present	N	Y
14	Automatically Finds Leaks at Joints, If Grease Is Present	N	Y
15	Able to Determine Size of Leaks, If Pipe Has Encrustation	N	Y
16	Requires Active Infiltration to Identify Defect at Source	Y	N
17	Contains Moving Parts That Could Clog from Debris or Silt	Y	N
18	Requires Bypass During Inspection, If Pipe Full	Y	N
19	Requires Special Training and Certification to Identify Defects	Y	N
20	Relies on Visual Observations to Record Defects	Y	N
21	Ave. Speed of Inspection (6-20" Sewer Main)	3ft / min	50ft / min