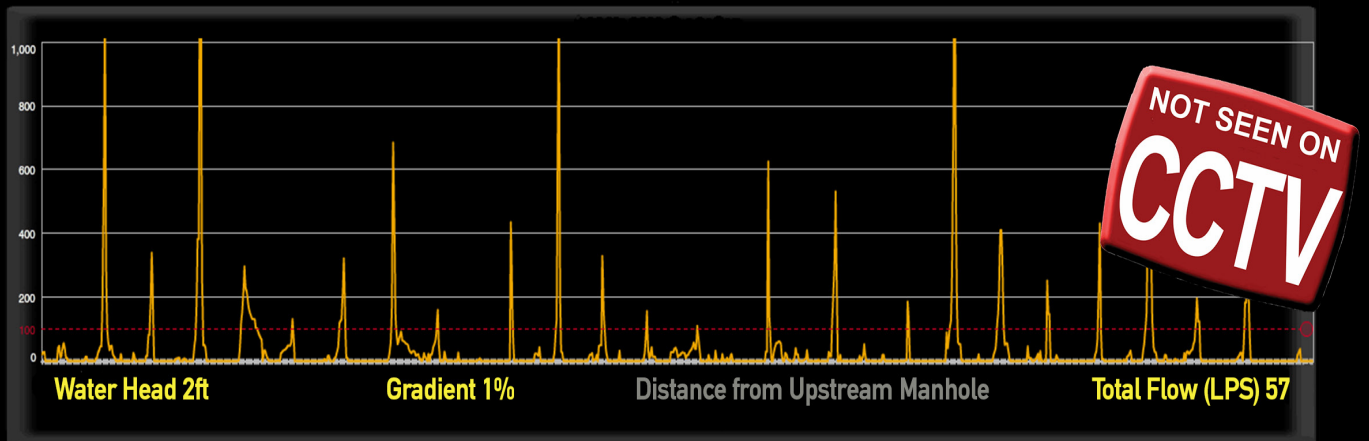


# ES-300 FOR SEWER MAINS™

150-450mm Pipe Diameters



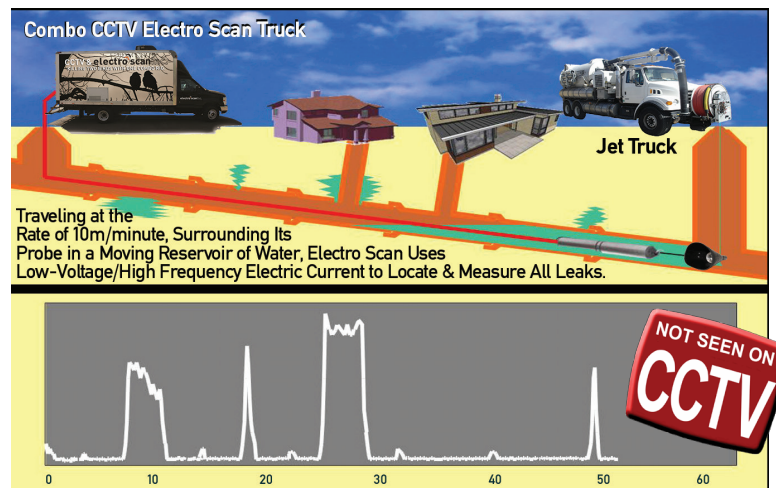
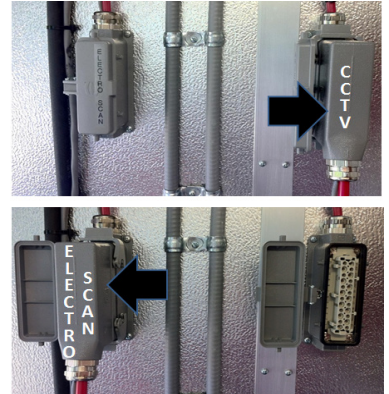
electro scan inc.

# CERTIFY LINING JOBS | FIND INFILTRATION

The ES-300 for Sewer Mains™ is designed for scanning sewer pipes from 150mm to 450mm in diameter. Available as an add-on product for use with a customer's existing CCTV truck, the Electro Scan ES-300 for Sewer Mains™ is designed to easily and quickly "plug & play" with existing CCTV onboard electronics, removing TV cameras on-the-fly and substituting the ES-300 for Sewer Mains™. Data from the ES-300 Probe is transmitted via existing cable and onboard rotary distance encoders to display information in the Electro Scan Laptop application. Data is automatically transmitted to Electro Scan's CriticalSewers™ cloud application.

Electro Scan's proprietary technology measures the variations of electricity flowing through pipe defects, automatically transmitting defect location and relative size, accurate to within one (1) centimeter. While electricity cannot not pass through non-conductive pipe walls (e.g. brick, cement, clay, reinforced concrete, plastic, pipe lining resins, etc.), it will pass through any defect that can cause water leaks.

Required accessories that are integral to the operation of the ES-300 for Sewer Mains™, include the ES-CCTV Integration Kit™, ES-300 Funnel Plug Jet Attachment™, ES-300 ByPass Plug, ES-Downstream Bypass Funnel Plug™, and ES-Side Wedge Pulley™. Electro Scan Support Plans, priced separately.



ES-300 for Sewer Mains™		Pipe	Diameter	150 to 450mm (6 to 20 inches)
		Material		Electrically non-conducting e.g. clay, plastic, concrete, reinforced concrete
	300 Probe	Length	990 mm (32 in)	
		Diameter	73mm (2.875 inches)	
	Distance	Accuracy	+/- 150mm (6 inches)	
		Resolution	10mm (0.5 inches)	
		System	Shaft encoder pulley coupled to cable	
	Scan Speed		10m/minute (30 ft/minute)	
	Scan Recorder	Laptop Computer	USB 2.0 Connection	
	Scan Processing & Reporting	Cloud Computing App	Transmitted via smart phone According to Support Plan with access at <a href="http://www.criticalsewers.com">www.criticalsewers.com</a>	
	Power Supply	External	12Vdc 0.5Amp	
	Environmental	IP 67	Withstand rain and low pressure wash down -4° to +49° C (25° to +120° F)	
	Warranty	Electronics	5 years	
	Accessories (included)	Laptop Computer Application CCTV Integration Kit (Various by Mfg.) CCTV Integration - Installation Services Funnel Plug Bypass Funnel Plug Jet Attachment Side Wedge Pulley Downstream Bypass Funnel Plug Jet Hose extractor Retrieval hook Ground Stake Probe Calibration and Ground Cable Reel: 30m (100ft) Probe Reel to Ground Reel Connection Cable Operation Manual		

**electro**  
**scan**inc.